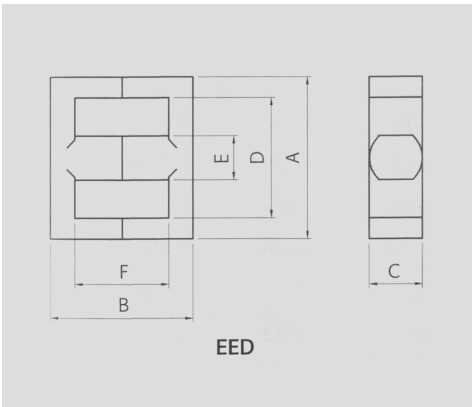
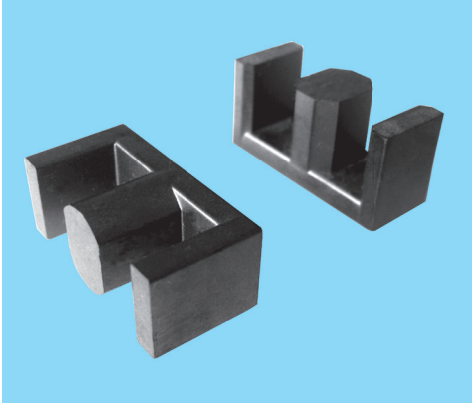


EED CORES



Note: 1)Core Loss

-Unit:Watt max.

-Measuring conditions

SR-4P,SR-5P: 100kHz,200mT,at 100°C

SR-2P,SR-6P: 100kHz,200mT,at 80°C

2)AL value

-Unit:nH/N²

-Measuring conditions:1kHz,0.25V25°C

-Tolerance: ± 25%

Part No.		EED2818	EED2820	EED2920	EED2924		
Type		EED	EED	EED	EED		
尺寸 Dimensions in mm	A	28.00±0.50	28.00±0.50	29.30±0.70	29.30±0.70		
	B	18.60±0.30	20.40±0.30	20.40±0.50	24.40±0.50		
	C	11.90±0.15	11.90±0.15	11.60±0.20	11.60±0.20		
	D	20.30min.	20.30min.	22.10 ^{+0.70} -0.50	22.10 ^{+0.70} -0.50		
	E	8.50±0.15	8.50±0.15	8.40±0.20	8.40±0.20		
	F	11.40±0.30	13.20±0.30	13.20±0.40	17.20±0.40		
磁芯参数 Core Set Parameters		C1(mm ⁻¹)	0.545	0.586	0.617	0.712	
		Le(mm)	46.9	50.5	51.9	59.9	
		Ae(mm ²)	86.1	86.1	84.0	84.1	
		Ve(mm ³)	4038	4350	4360	5030	
		Ac(mm ²)	101.2	101.2	97.4	97.4	
		Aw(mm ²)	75.3	81.1	90.7	118.0	
		W(g/set)	20.8	22.2	21.8	24.9	
电气特性 Electrical Characteristics ⁽¹⁾⁽²⁾		AL value	SR-4P	3700	3000	3200	2800
			SR-2P	4100	3200	3450	3050
			SR-5P	3900	3100	3300	2900
			SR-6P	4600	3600	3900	3400
		Core loss	SR-4P	2.22	2.39	2.40	2.77
			SR-2P	2.15	2.28	2.30	2.65
			SR-5P	2.02	2.18	2.18	2.52
			SR-6P	1.94	2.09	2.09	2.41

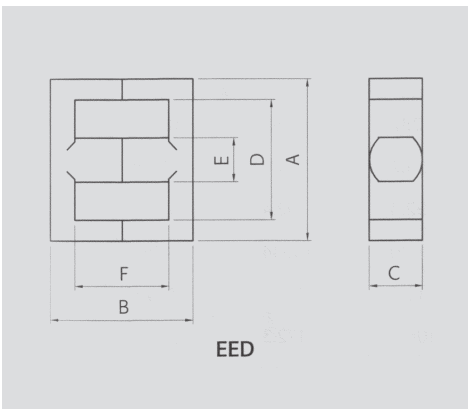
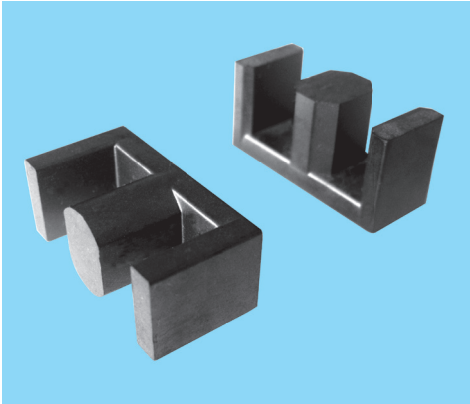


SHIRUI

HEFEI SHIRUI ELECTRONIC TECHNOLOGY CO.,LTD

sales@shiruitech.com
www.shiruitech.com

EED CORES



Note: 1)Core Loss

-Unit:Watt max.

-Measuring conditions

SR-4P,SR-5P:100kHz,200mT,at 100°C

SR-2P,SR-6P:100kHz,200mT,at 80°C

2)AL value

-Unit:nH/N²

-Measuring conditions:1kHz,0.25V/25°C

-Tolerance: ± 25%

Part No.		EED2929	EED4018	EED4025	EED4029	
Type		EED	EED	EED	EED	
尺寸 Dimensions in mm	A	29.30±0.70	40.80±0.50	40.80±0.50	40.80±0.50	
	B	29.20±0.50	9.10±0.30	12.50±0.30	14.50±0.30	
	C	11.60±0.20	21.90 ^{+0.20} _{-0.30}	21.90 ^{+0.20} _{-0.30}	21.90 ^{+0.20} _{-0.30}	
	D	22.10 ^{+0.70} _{-0.50}	30.80±0.50	30.80±0.50	30.80±0.50	
	E	8.40±0.20	11.00±0.30	11.00±0.30	11.00±0.30	
	F	22.00±0.40	5.30±0.20	8.70±0.20	10.70±0.20	
磁芯参数 Core Set Parameters	C1(mm ⁻¹)	0.826	0.282	0.352	0.394	
	Le(mm)	69.5	54.2	67.8	75.8	
	Ae(mm ²)	84.1	192.4	192.4	192.4	
	Ve(mm ³)	5850	10420	13044	14580	
	Ac(mm ²)	97.4	218.8	218.8	218.8	
	Aw(mm ²)	151.0	104.9	172.3	211.9	
	W(g/set)	29	55	69	78	
电气特性 Electrical Characteristics ⁽¹⁾⁽²⁾	AL value	SR-4P	2100	7000	6400	5200
		SR-2P	2300	8300	7600	6250
		SR-5P	2200	7200	6590	5400
	Core loss	SR-6P	2600	9200	8400	6900
		SR-4P	3.22	5.73	7.17	8.02
		SR-2P	3.03	5.51	6.82	7.69
		SR-5P	2.93	5.21	6.52	7.29
		SR-6P	2.81	5.00	6.26	7.00



SHIRUI

HEFEI SHIRUI ELECTRONIC TECHNOLOGY CO.,LTD

sales@shiruitech.com
www.shiruitech.com