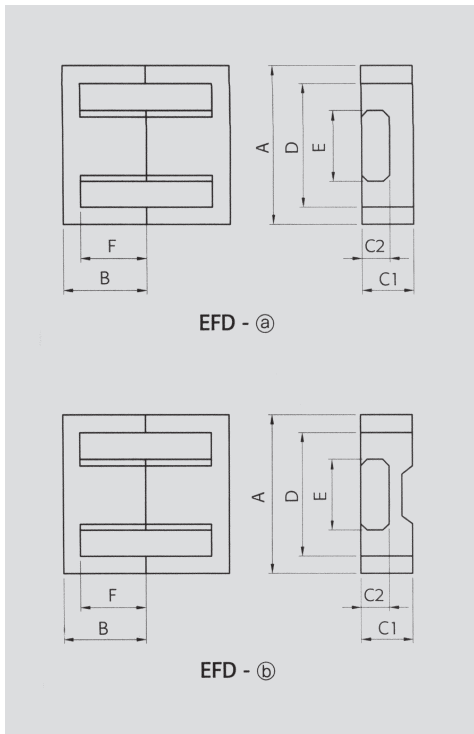


EFD CORES

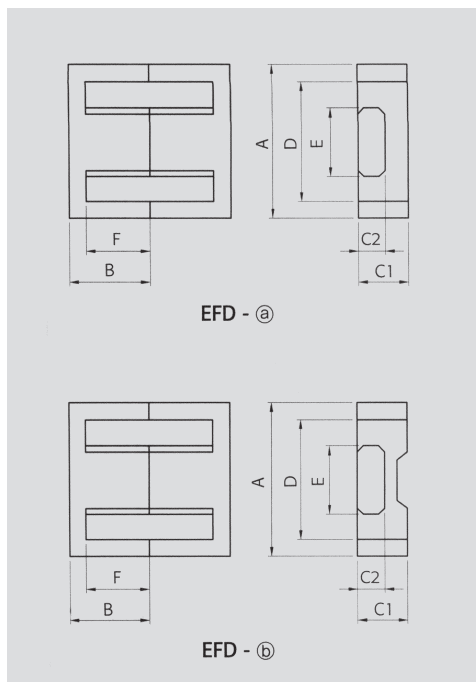


Note: 1)Core Loss
 -Unit:Watt max.
 -Measuring conditions
 SR-4P,SR-5P:100kHz,200mT,at 100°C
 SR-2P,SR-6P:100kHz,200mT,at 80°C

2)AL value
 -Unit:nH/N²
 -Measuring conditions:1kHz,0.25V25°C
 -Tolerance: ± 25%

Part No.		EFD1322N	EFD1515	EFD1618	EFD1715	
Type		EFD-Ⓐ	EFD-Ⓑ	EFD-Ⓐ	EFD-Ⓐ	
尺寸 Dimensions in mm	A	13.40 ± 0.30	15.00 ± 0.40	16.40 ± 0.30	16.90 ± 0.30	
	B	11.20 ± 0.15	7.50 ± 0.15	9.00 ± 0.20	7.60 ± 0.20	
	C1	4.50 ± 0.15	7.50 ± 0.15	4.50 ± 0.15	5.50 ± 0.20	
	C2	3.00 ± 0.10	2.40 ± 0.10	2.35 ± 0.10	2.90 ^{+0.05} -0.15	
	D	9.80 ± 0.20	11.00 ± 0.35	12.60min.	12.80min.	
	E	5.30 ± 0.15	5.30 ± 0.15	6.70 ± 0.15	7.30 ± 0.15	
	F	8.60 ± 0.15	5.50 ± 0.25	7.30 ± 0.20	5.60 ± 0.15	
磁芯参数 Core Set Parameters	C1(mm ⁻¹)	2.687	2.270	2.400	1.740	
	Le(mm)	45.5	34.0	34.4	34.8	
	Ae(mm ²)	16.9	15.0	14.3	20.0	
	Ve(mm ³)	771	510	492	696	
	Ac(mm ²)	15.9	12.7	30.2	21.2	
	Aw(mm ²)	38.3	31.4	44.5	32.7	
	W(g/set)	4	2.7	3.0	3.9	
电气特性 Electrical Characteristics ⁽¹⁾⁽²⁾	AL value	SR-4P	810	890	840	1050
		SR-2P	950	1050	1050	1210
		SR-5P	850	920	900	1200
		SR-6P	1070	1180	1170	1400
	Core loss	SR-4P	0.46	0.31	0.30	0.42
		SR-2P	0.44	0.29	0.28	0.40
		SR-5P	0.42	0.28	0.27	0.38
		SR-6P	0.41	0.27	0.26	0.37

EFD CORES



Note: 1)Core Loss
 -Unit:Watt max.
 -Measuring conditions
 SR-4P,SR-5P:100kHz,200mT,at 100°C
 SR-2P,SR-6P:100kHz,200mT,at 80°C
 1) 100kHz,100mT,at 100°C

2)AL value
 -Unit:nH/N²
 -Measuring conditions:1kHz,0.25V/25°C
 -Tolerance: ± 25%

Part No.		EFD1820	EFD1822	EFD2020	EFD2023	EFD2025N	
Type		EFD-(a)	EFD-(a)	EFD-(b)	EFD-(b)	EFD-(a)	
尺寸 Dimensions in mm	A	17.70±0.30	17.70±0.30	20.00±0.55	20.00±0.55	20.30±0.35	
	B	10.10±0.20	10.90±0.20	10.00±0.15	11.50±0.15	12.75±0.25	
	C1	5.60±0.15	5.60±0.15	6.65±0.15	6.65±0.15	6.65 ^{+0.20} -0.15	
	C2	3.40±0.10	3.40±0.10	3.60±0.15	3.60±0.15	3.60 ^{+0.20} -0.15	
	D	13.10min.	13.10min.	15.40±0.50	15.40±0.50	15.70±0.30	
	E	7.50±0.15	7.50±0.15	8.90±0.20	8.90±0.20	8.90±0.20	
	F	7.80±0.20	8.60±0.20	7.70±0.20	9.20±0.20	10.45±0.20	
磁芯参数 Core Set Parameters	C1(mm ⁻¹)	2.020	2.140	1.520	1.710	1.940	
	Le(mm)	51.6	54.8	47.0	53.0	59.7	
	Ae(mm ²)	25.6	25.6	31.0	31.0	30.8	
	Ve(mm ³)	1320	1402	1460	1643	1840	
	Ac(mm ²)	25.5	25.5	32.0	32.0	14.4	
	Aw(mm ²)	46.0	53.6	50.0	60.5	33.8	
	W(g/set)	5.6	6.4	7.2	7.9	9.0	
电气特性 Electrical Characteristics ⁽¹⁾⁽²⁾	AL value	SR-4P	1050	990	1370	1240	1100
		SR-2P	1250	1200	1610	1500	1260
		SR-5P	1100	1030	1400	1300	1100
	Core loss	SR-6P	1400	1330	1820	1650	1450
		SR-4P	0.79	0.84	0.88	0.99	1.10
		SR-2P	0.75	0.79	0.82	0.92	1.10
		SR-5P	0.73	0.77	0.80	0.90	1.01
		SR-6P	0.70	0.74	0.77	0.87	0.98



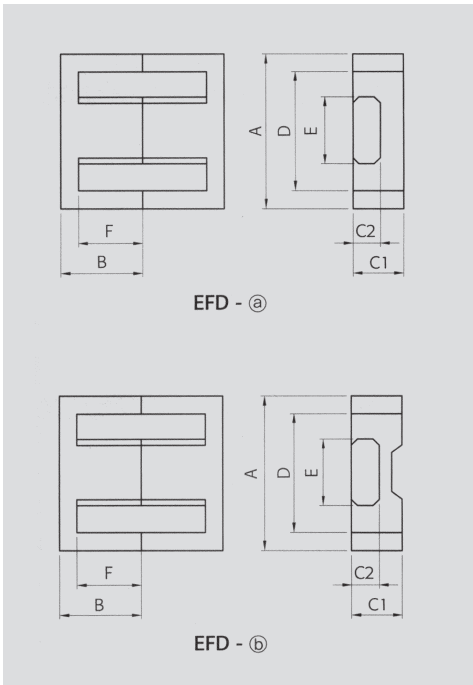
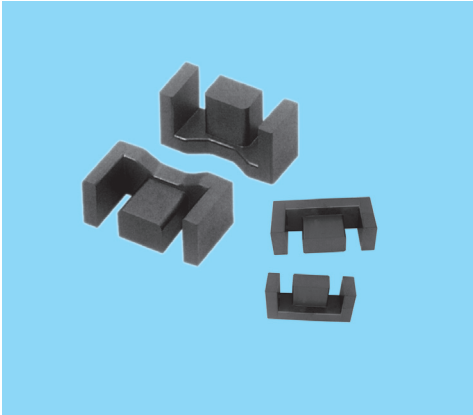
SHIRUI

HEFEI SHIRUI ELECTRONIC TECHNOLOGY CO.,LTD

sales@shiruitech.com
www.shiruitech.com

Part No.		EFD2025	EFD2027	EFD2120	EFD2124N	EFD2125	EFD2126N	EFD2520	EFD2525	
Type		EFD-①	EFD-①	EFD-②	EFD-①	EFD-②	EFD-①	EFD-②	EFD-②	
尺寸 Dimensions in mm	A	20.00 ± 0.55	20.30 ± 0.35	20.50 ± 0.55	21.20 ± 0.40	20.50 ± 0.35	21.20 ± 0.40	25.40 ± 0.40	25.00 ± 0.65	
	B	12.50 ± 0.20	13.50 ± 0.25	10.00 ± 0.15	11.80 ± 0.20	12.75 ± 0.20	13.10 ± 0.20	10.50 ± 0.20	12.50 ± 0.15	
	C	6.65 ± 0.15	5.60 ^{+0.20} _{-0.15}	6.65 ± 0.15	5.90 ± 0.15	6.65 ± 0.15	5.90 ± 0.15	11.00 ± 0.20	9.10 ± 0.20	
	D1	3.60 ± 0.15	3.40 ^{+0.20} _{-0.15}	3.60 ± 0.15	3.30 ± 0.10	3.60 ± 0.15	3.30 ± 0.10	6.60 ± 0.15	5.20 ± 0.15	
	D2	15.40 ± 0.50	14.30 ± 0.30	15.90 ± 0.30	15.80min.	15.90 ^{+0.30} _{-0.25}	15.80min.	19.00 ± 0.40	18.70 ± 0.60	
	E	8.90 ± 0.20	8.90 ± 0.20	8.90 ± 0.15	9.40 ± 0.20	8.90 ± 0.15	9.40 ^{+0.15} _{-0.25}	6.60 ± 0.15	11.40 ± 0.20	
	F	10.20 ± 0.20	10.45 ± 0.20	7.70 ± 0.20	9.10 ± 0.20	10.45 ± 0.20	10.40 ± 0.20	7.00 ± 0.15	9.30 ± 0.25	
磁芯参数 Core Set Parameters	C1(mm ⁻¹)	1.840	1.864	1.516	1.696	1.938	1.863	0.948	0.980	
	Le(mm)	57.0	61.5	47	53.1	59.7	58.3	54.8	57.0	
	Ae(mm ²)	31.0	33.0	31	31.3	30.8	31.3	57.8	58.0	
	Ve(mm ³)	1767	2030	1457	1660	1840	1825	3163	3300	
	Ac(mm ²)	32.0	30.3	32	31	32	31	43.6	60.0	
	Aw(mm ²)	66.3	56.4	53.9	61.9	73.2	66.6	86.8	70.0	
	W(g/set)	8.5	9.5	7.4	8.4	8.8	9.2	15	17.1	
电气特性 Electrical Characteristics ⁽¹⁾⁽²⁾	AL value	SR-4P	1150	1130	1370	1200	1100	1200	2200	2250
		SR-2P	1350	1300	1550	1400	1300	1400	2600	2600
		SR-5P	1200	1200	1400	1300	1100	1300	2300	2300
		SR-6P	1550	1490	1800	1600	1500	1600	3000	2980
	Core loss	SR-4P	1.06	1.22	0.90	1.00	1.10	1.10	1.90	1.98
		SR-2P	1.00	1.15	0.9	1.00	1.10	1.10	1.90	1.98
		SR-5P	0.97	1.12	0.80	0.91	1.01	1.00	1.74	1.82
		SR-6P	0.94	1.08	0.77	0.88	0.98	0.97	1.68	1.75

EFD CORES



Note: 1)Core Loss
 -Unit:Watt max.
 -Measuring conditions
 SR-4P,SR-5P:100kHz,200mT,at 100°C
 SR-2P,SR-6P:100kHz,200mT,at 80°C

2)AL value
 -Unit:nH/N²
 -Measuring conditions:1kHz,0.25V25°C
 -Tolerance: ± 25%

Part No.		EFD2525V	EFD2625	EFD3030N	EFD3030	
Type		EFD-(a)	EFD-(b)	EFD-(b)	EFD-(b)	
尺寸 Dimensions in mm	A	25.05 ± 0.75	26.00 ± 0.55	30.90 ± 0.80	30.00 ± 0.80	
	B	12.60 ± 0.20	12.60 ± 0.15	15.30 ± 0.20	15.00 ± 0.15	
	C1	12.45 ± 0.25	9.10 ± 0.20	9.10 ± 0.20	9.10 ± 0.25	
	C2	8.30 ± 0.30	5.20 ± 0.15	4.90 ± 0.15	4.90 ± 0.15	
	D	19.20 ± 0.40	19.40 ± 0.50	23.30 ± 0.50	22.40 ± 0.75	
	E	8.80 ± 0.25	11.40 ± 0.20	14.60 ± 0.25	14.60 ± 0.25	
	F	9.55 ± 0.25	9.30 ± 0.25	11.50 ± 0.30	11.20 ± 0.30	
磁芯参数 Core Set Parameters	C1(mm ⁻¹)	0.810	0.973	1.003	0.990	
	Le(mm)	60.0	58.4	69.4	68.0	
	Ae(mm ²)	73.0	60.0	69.2	69.0	
	Ve(mm ³)	4300	3500	4800	4700	
	Ac(mm ²)	73.0	59.0	71.5	71.0	
	Aw(mm ²)	91.7	74.4	100.1	87.4	
	W(g/set)	21	17	24.3	22.1	
电气特性 Electrical Characteristics ⁽¹⁾⁽²⁾	AL value	SR-4P	2700	2300	2300	1950
		SR-2P	3250	2800	2800	2400
		SR-5P	2800	2400	2400	2000
		SR-6P	3570	3060	3100	2670
	Core loss	SR-4P	2.60	2.10	2.88	2.82
		SR-2P	2.50	2.00	2.88	2.70
		SR-5P	2.40	1.93	2.64	2.59
		SR-6P	2.40	1.86	2.54	2.49



sales@shiruitech.com
 www.shiruitech.com

HEFEI SHIRUI ELECTRONIC TECHNOLOGY CO.,LTD

Part No.		EFD3032	EFD3033V	EFD3130D	EFD3130	EFD3133	EFD4351	EFD4549	EFD5050	
Type		EFD-(b)	EFD-(b)	EFD-(b)	EFD-(b)	EFD-(b)	EFD-(a)	EFD-(a)	EFD-(a)	
尺寸 Dimensions in mm	A	30.00 ± 0.80	29.70 ± 0.80	30.90 ± 0.80	30.90 ± 0.80	31.70 ± 0.60	43.00 ^{+0.40} _{-0.50}	45.20 ± 0.50	50.00 ± 0.50	
	B	16.00 ± 0.15	16.40 ± 0.30	15.00 ± 0.20	15.00 ± 0.20	16.80 ± 0.30	26.30 ± 0.15	24.50 ± 0.20	25.00 ± 0.30	
	C1	9.10 ± 0.20	12.50 ± 0.40	9.10 ± 0.20	9.10 ± 0.25	12.50 ± 0.40	6.70 ± 0.15	5.90 ± 0.25	10.00 ± 0.30	
	C2	4.90 ± 0.15	8.20 ± 0.30	4.90 ± 0.15	4.90 ± 0.15	8.20 ± 0.30	4.40 ± 0.15	3.00 ± 0.20	6.00 ± 0.20	
	D	22.40 ± 0.75	22.10 ± 0.50	23.90 ± 0.50	23.30 ± 0.50	24.10 ± 0.50	28.10 ± 0.50	33.30 ± 0.50	35.00min.	
	E	14.60 ± 0.25	11.60 ± 0.30	14.60 ± 0.25	14.60 ± 0.25	11.60 ± 0.30	21.60 ± 0.30	24.00 ± 0.30	23.00 ± 0.30	
	F	12.20 ± 0.30	11.90 ± 0.30	11.20 ± 0.30	11.20 ± 0.30	12.30 ± 0.30	18.50 ± 0.15	17.80 ± 0.20	17.00 ± 0.30	
磁芯参数 Core Set Parameters	C1(mm ⁻¹)	1.043	0.750	0.987	0.990	0.768	1.101	1.447	0.680	
	Le(mm)	72	73.0	68.2	68.2	76	107.3	105	103.3	
	Ae(mm ²)	69	97.0	69.1	69.1	98.9	97.5	72.6	151.5	
	Ve(mm ³)	4968	7100	4710	4712	7516	10460	7620	15463	
	Ac(mm ²)	71.5	95.0	71.5	71.5	95.1	95	72	138.0	
	Aw(mm ²)	95.2	125.0	104.2	97.4	153.8	120.3	165.5	221.0	
	W(g/set)	25.2	36.6	24	24.3	24.5	55	40.7	90	
电气特性 Electrical Characteristics ⁽¹⁾⁽²⁾	AL value	SR-4P	1900	3020	1800	1800	2500	2080	1100	3100
		SR-2P	2300	3575	2200	2300	3000	2500	1300	3750
		SR-5P	2000	3100	1900	1900	2600	2150	1150	3200
		SR-6P	2600	4020	2500	2560	3300	2770	1470	4160
	Core loss	SR-4P	2.98	4.26	2.83	2.83	4.50	6.28	4.57	10.00
		SR-2P	2.85	4.10	2.83	2.83	4.20	6.00	4.29	9.00
		SR-5P	2.73	3.91	2.59	2.59	4.10	5.75	4.19	8.00
		SR-6P	2.63	3.76	2.50	2.50	4.05	5.54	4.04	7.80

