

# Drum Core ( DR Type )

## 1. Shape 形状

Fig 1  
d-3

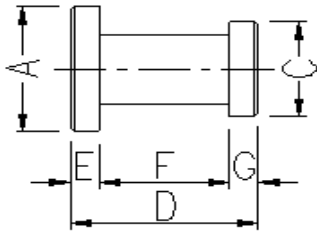


Fig 2

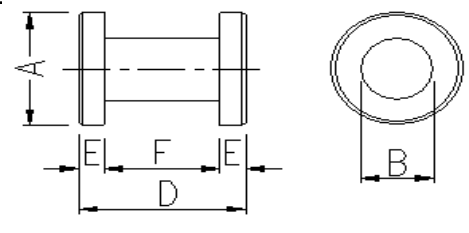


Fig 3  
d-1

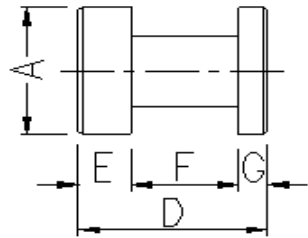


Fig 4  
d-13

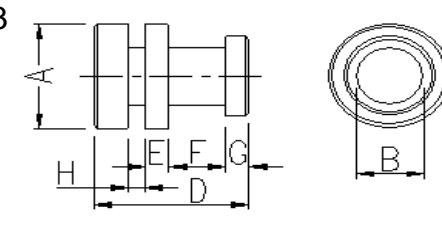


Fig 5  
N

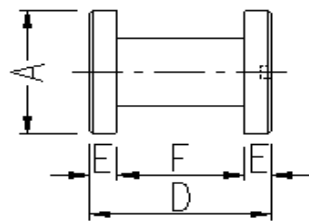


Fig 6  
Z

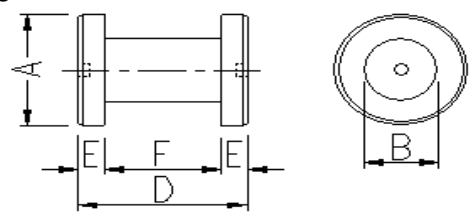


Fig 7  
SO

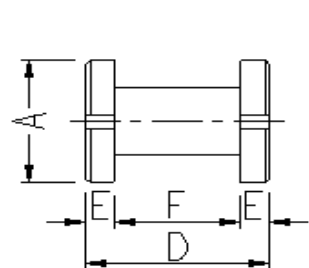


Fig 8  
FSO

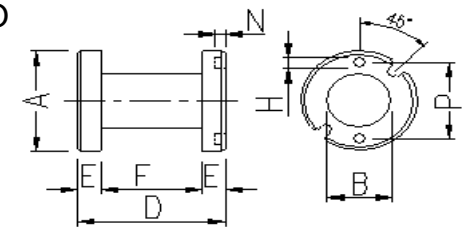


Fig 9  
F

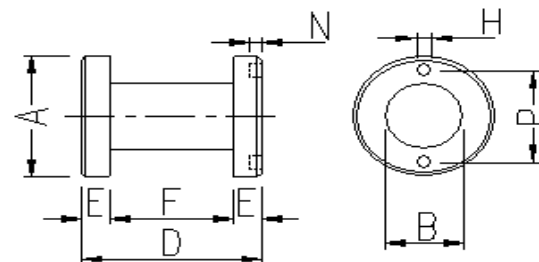


Fig 10  
F3

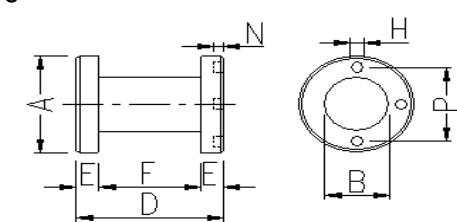


Fig 11  
FSOW

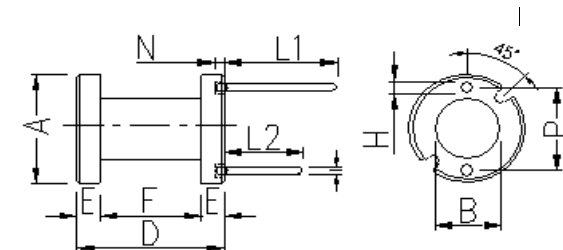
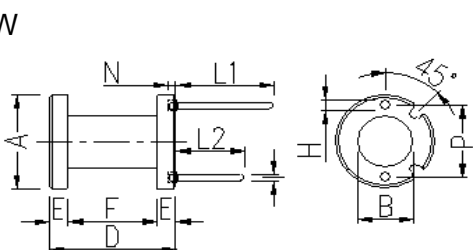


Fig 12  
FSBW



# Drum Core ( DR Type )

## 1. Shape 形狀

Fig 13

F4

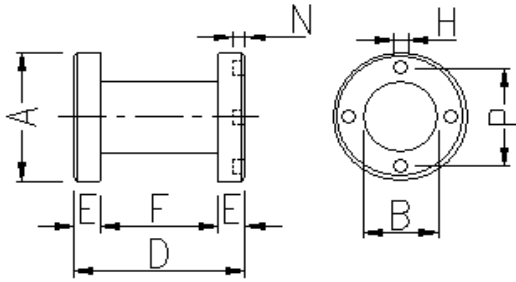


Fig 14

ZSO

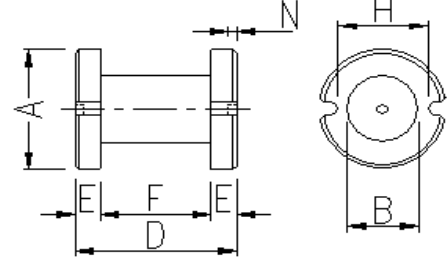
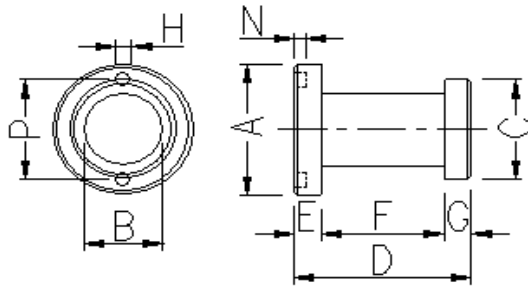


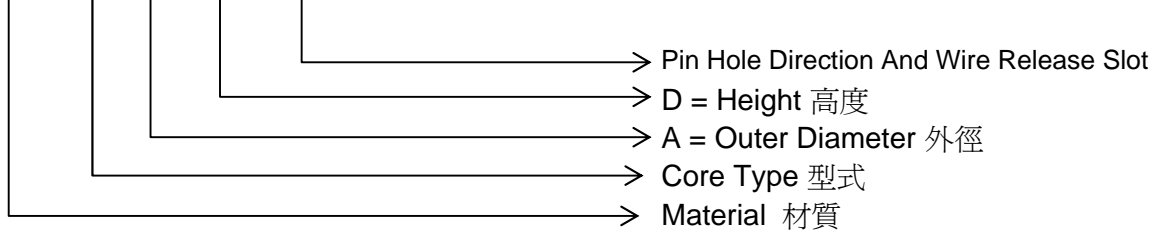
Fig 15

d-3



## 2. Ordering Code 編碼規則

F9S DR 6 X 8 F/Z/SO



## 3. Dimensions 尺寸 ( mm )

Core Size \ Conf.	A	B	D	E	F	G	Fig
DR 2x2.15	2.0±0.15	1.75±0.15	2.15±0.2	0.5±0.1	1.15±0.15		2
DR 2.2x7 Z	2.2±0.15	1.75±0.15	7.0±0.3	2.0±0.15	3.0±0.2		6
DR 2.3x4 Z	2.3±0.15	1.5±0.15	4.0±0.2	1.0±0.15	2.0±0.2		6
DR 2.5x1.9	2.5±0.15	1.2±0.15	1.9±0.2	0.55±0.1	0.8±0.15		2
DR 2.5x4 Z	2.5±0.15	1.5±0.15	4.0±0.2	0.9±0.15	2.2±0.2		6
DR 2.5x4.5 d-13	2.5±0.15	1.75±0.15	4.5±0.2	0.7±0.15	0.4±0.1		4
DR 2.53x1.4 d-13	2.53±0.15	1.5±0.15	1.4±0.2	0.3±0.1	0.8±0.1		4
DR 2.75x8FSO	2.75±0.15	1.4±0.15	8.0±0.3	1.5±0.15	5.0±0.2		8
DR 3.0x1.8 d-1	3.0±0.15	1.5±0.15	1.8±0.2	0.5±0.1	0.9±0.1	0.4±0.1	3
DR 3.0x5.0 F	3.0±0.15	1.3±0.15	5.0±0.3	1.4±0.15	2.2±0.2		9
DR 3.0x5.0 Z	3.0±0.15	1.3±0.15	5.0±0.3	1.4±0.15	2.2±0.2		6
DR 3.3x2.2	3.3±0.15	1.2±0.15	2.2±0.2	0.5±0.1	1.2±0.15		2

## Drum Core ( DR Type )

### 3. Dimensions 尺寸 ( mm )

Core Size \ Conf.	A	B	D	E	F	G	Fig
DR 3.5x1.9	3.5±0.15	1.5±0.15	1.9±0.2	0.5±0.1	0.9±0.15		2
DR 3.5x6 Z	3.5±0.15	1.5±0.15	6.0±0.3	1.25±0.15	3.5±0.2		6
DR 3.6x2.1	3.6±0.15	1.3±0.15	2.1±0.2	0.45±0.1	1.2±0.15		2
DR 3.8x3.3	3.8±0.15	1.8±0.15	3.3±0.2	1.0±0.15	1.3±0.15		2
DR 3.8x4 d-1	3.8±0.15	1.8±0.15	4.0±0.2	1.8±0.15	1.5±0.15	0.7±0.15	3
DR 3.8x4 d-3	3.8±0.15	2.1±0.15	4.0±0.2	1.2±0.15	2.1±0.2	0.7±0.15	1
DR 3.9x5.0	3.9±0.15	2.0±0.15	5.0±0.2	1.0±0.15	3.0±0.2		2
DR 4.0x2.0	4.0±0.2	2.0±0.15	2.0±0.2	0.5±0.1	1.0±0.15		2
DR 4.0x4.2 F	4.0±0.2	2.5±0.15	4.2±0.2	1.2±0.1	2.0±0.2		9
DR 4.0x4.5 d-3	4.0±0.2	2.0±0.15	4.5±0.2	1.5±0.1	2.3±0.2	0.7±0.15	1
DR 4.0x4.5 d-13	4.0±0.2	2.0±0.15	4.5±0.2	1.5±0.1	2.3±0.2	0.7±0.15	4
DR 4.0x5.5 FSO	4.0±0.2	2.0±0.15	5.5±0.3	1.6±0.1	2.3±0.2		8
DR 4.0x8.0 Z	4.0±0.2	2.0±0.15	8.0±0.3	1.5±0.15	5.0±0.25		6
DR 4.2x3.2	4.2±0.2	2.0±0.15	3.2±0.2	0.9±0.15	1.4±0.15		2
DR 4.2x6 Z	4.2±0.2	2.0±0.15	6.0±0.3	1.65±0.15	2.7±0.2		6
DR 4.2x7 FSO	4.2±0.2	1.7±0.15	7.0±0.3	1.65±0.15	3.7±0.2		8
DR 4.4x2.4	4.4±0.2	2.0±0.15	2.4±0.2	0.7±0.15	1.0±0.15		2
DR 4.4x5.6 d-1	4.4±0.2	2.0±0.15	5.6±0.3	1.1±0.15	3.8±0.2	0.7±0.15	3
DR 4.5x6.0	4.5±0.2	2.0±0.15	6.0±0.3	1.65±0.15	2.7±0.2		2
DR 4.5x7.0 FSOW	4.5±0.2	2.0±0.15	7.0±0.3	2.0±0.15	3.0±0.2		11
DR 4.8x5.0	4.8±0.2	1.9±0.15	5.0±0.3	0.75±0.15	3.5±0.2		2
DR 4.8x16 Z	4.8±0.2	2.8±0.15	16.0±0.3	3.0±0.2	10.0±0.2		6
DR 4.9x1.8 SO	4.9±0.2	2.0±0.15	1.8±0.2	0.4±0.1	1.0±0.15		7
DR 5.0x4.5	5.0±0.2	2.4±0.15	4.5±0.3	1.0±0.15	2.5±0.2		2
DR 5.0x5.5 F	5.0±0.2	2.0±0.15	5.5±0.3	1.5±0.15	2.5±0.2		9
DR 5.0x6.0 Z	5.0±0.2	2.0±0.15	6.0±0.3	1.65±0.15	2.7±0.2		6
DR 5.0x6.7 SO	5.0±0.2	3.0±0.15	6.7±0.3	1.5±0.15	3.7±0.2		7
DR 5.0x7.0 FSO	5.0±0.2	2.2±0.15	7.0±0.3	1.75±0.15	3.5±0.2		8
DR 5.0x23.0 Z	5.0±0.2	3.5±0.2	23.0±0.6	4.0±0.3	15.0±0.4		6
DR 5.5x2.0	5.5±0.2	2.4±0.15	2.0±0.2	0.7±0.15	0.6±0.15		2
DR 5.5x6.5	5.5±0.2	2.5±0.15	6.5±0.3	1.25±0.15	4.0±0.2		2
DR 6.0x4.5 F	6.0±0.2	2.5±0.15	4.5±0.3	1.0±0.15	2.5±0.2		8
DR 6.0x5.0 FSOW	6.0±0.2	2.5±0.15	5.0±0.3	1.0±0.15	3.0±0.2		10
DR 6.0x6.0 FSO	6.0±0.2	2.3±0.2	6.0±0.3	1.6±0.15	2.8±0.2		8
DR 6.0x6.0 FSBW	6.0±0.2	2.3±0.2	6.0±0.3	1.7±0.15	2.6±0.2		12
DR 6.0x8.0 F	6.0±0.2	2.5±0.2	8.0±0.3	1.9±0.15	4.2±0.2		9
DR 6.0x8.0 F3	6.0±0.2	2.5±0.2	8.0±0.3	2.0±0.2	4.0±0.2		10
DR 6.0x8.3 Z	6.0±0.2	2.0±0.2	8.3±0.3	2.15±0.2	4.0±0.2		6
DR 6.0x8.3 FSOW	6.0±0.2	2.5±0.2	8.3±0.3	2.15±0.2	4.0±0.2		11
DR 6.0x11.0 ZSO	6.0±0.2	2.8±0.2	11.0±0.4	2.0±0.2	7.0±0.3		14
DR 6.0x20.0 Z	6.0±0.2	3.2±0.2	20.0±0.4	2.5±0.2	15.0±0.4		6
DR 6.35x6.0 SO	6.35±0.2	3.2±0.2	6.0±0.3	1.5±0.2	3.0±0.4		7
DR 6.35x15.0 Z	6.35±0.2	3.2±0.2	15.0±0.5	2.5±0.2	10.0±0.4		6

# Drum Core ( DR Type )

## 3. Dimensions 尺寸 ( mm )

Core Size \ Conf.	A	B	D	E	F	G	Fig
DR 6.5x4.0	6.5±0.2	2.3±0.15	4.0±0.2	1.0±0.15	2.0±0.15		2
DR 6.5x9.6 FSO	6.5±0.2	3.0±0.2	9.6±0.3	2.35±0.2	4.8±0.3		8
DR 6.7x8.2 d-1	6.7±0.2	3.5±0.2	8.2±0.3	1.7±0.15	5.5±0.25	1.0±0.15	3
DR 6.8x3.0	6.8±0.2	2.0±0.2	3.0±0.2	0.8±0.15	1.4±0.15		2
DR 6.8x11.7 ZSO	6.8±0.2	2.0±0.2	11.7±0.4	1.35±0.15	9.0±0.3		14
DR 6.9x8.0 FSO	6.9±0.2	3.5±0.2	8.0±0.3	1.9±0.15	4.2±0.2		11
DR 7.0x3.5 SO	7.0±0.2	3.1±0.2	3.5±0.3	1.0±0.15	1.5±0.15		7
DR 7.0x3.8	7.0±0.2	2.2±0.15	3.8±0.3	1.0±0.15	1.8±0.15		2
DR 7.0x8.0 F	7.0±0.2	3.0±0.2	8.0±0.3	1.75±0.15	4.5±0.2		9
DR 7.5x7.0	7.5±0.2	3.0±0.2	7.0±0.3	1.5±0.15	4.5±0.2		2
DR 7.5x9.5 F	7.5±0.2	3.0±0.2	9.5±0.3	2.0±0.2	5.5±0.25		9
DR 7.8x5 SO	7.8±0.2	3.0±0.2	5.0±0.3	1.3±0.15	2.4±0.2		7
DR 7.8x6.5 FSO	7.8±0.2	3.4±0.2	6.5±0.3	1.8±0.15	2.9±0.2		8
DR 7.8x7.5 ZSO	7.8±0.2	4.5±0.2	7.5±0.3	1.75±0.15	4.0±0.2		14
DR 7.85x2.7	7.85±0.2	2.0±0.2	2.7±0.2	0.65±0.15	1.4±0.15		2
DR 7.9x7 SO	7.9±0.2	2.5±0.2	7.0±0.3	2.0±0.2	3.0±0.2		7
DR 8.0 x2.5	8.0±0.25	1.5±0.2	2.5±0.3	0.65±0.15	1.2±0.15		2
DR 8.0x5.0 SO	8.0±0.25	3.7±0.2	5.0±0.3	1.2±0.15	2.6±0.2		7
DR 8.0x7.0 F3	8.0±0.25	3.5±0.2	7.0±0.3	2.0±0.2	3.0±0.2		10
DR 8.0x8.0 FSO	8.0±0.25	3.0±0.2	8.0±0.3	2.0±0.2	4.0±0.2		8
DR 8.0x9.0 F	8.0±0.25	3.0±0.2	9.0±0.3	2.5±0.2	4.0±0.2		9
DR 8.0x10.0 N	8.0±0.25	3.5±0.2	10.0±0.4	2.35±0.2	5.35±0.25		5
DR 8.0x30.0 Z	8.0±0.25	6.6±0.2	30.0±0.7	3.0±0.2	24.0±0.25		6
DR 8.2x10.5	8.2±0.25	3.5±0.2	10.5±0.4	3.0±0.15	5.5±0.25		2
DR 8.4x4.0	8.4±0.25	2.5±0.2	4.0±0.3	1.0±0.15	2.0±0.15		2
DR 8.5x4.5	8.5±0.25	3.4±0.2	4.5±0.3	0.95±0.15	0.65±0.15		2
DR 8.5x8.0 F	8.5±0.25	3.5±0.2	8.0±0.3	1.5±0.15	5.0±0.25		9
DR 9.0x4.0 N	9.0±0.25	4.0±0.2	4.0±0.3	1.1±0.15	1.8±0.15		5
DR 9.0x11.0 F	9.0±0.25	3.0±0.2	11.0±0.4	2.25±0.2	6.5±0.25		9
DR 9.0x12.0 F3	9.0±0.25	3.9±0.2	12.0±0.4	2.75±0.2	6.5±0.25		10
DR 9.0x12.0 Z	9.0±0.25	4.0±0.2	12.0±0.4	2.5±0.2	7.0±0.25		6
DR 9.0x12.0 FSO	9.0±0.25	4.0±0.2	12.0±0.4	2.5±0.2	7.0±0.25		8
DR 9.0x19.0 ZSO	9.0±0.25	5.0±0.2	19.0±0.5	3.45±0.2	12.1±0.25		14
DR 9.25x4.0 N	9.25±0.25	4.0±0.2	4.0±0.3	1.0±0.15	3.0±0.2		5
DR 9.55x19.0 Z	9.55±0.25	5.5±0.2	19.0±0.5	4.0±0.2	9.0±0.3		6
DR 9.8x11 FSO	9.8±0.25	5.5±0.2	11.0±0.3	2.0±0.2	7.0±0.25		8
DR 10.0x4.5 N	10.0±0.3	4.5±0.2	4.5±0.3	1.0±0.15	2.5±0.25		5
DR 10.0x5.0 SO	10.0±0.3	4.0±0.2	5.0±0.3	1.2±0.15	2.6±0.2		7
DR 10.0x5.5 F	10.0±0.3	4.0±0.2	5.5±0.3	1.2±0.15	3.1±0.2		9
DR 10.0x10.0 F4	10.0±0.3	4.5±0.2	10.0±0.4	2.0±0.2	6.0±0.25		13
DR 10.0x10.0 ZSO	10.0±0.3	4.5±0.2	10.0±0.4	2.5±0.2	5.0±0.25		14
DR 10.0x12.0 F3	10.0±0.3	4.0±0.2	12.0±0.4	2.5±0.2	7.0±0.3		10
DR 10.0x18.3 Z	10.0±0.3	5.9±0.2	18.3±0.5	3.1±0.2	12.1±0.3		6
DR 10.0x24.0	10.0±0.3	6.4±0.2	24.0±0.6	2.2±0.2	19.6±0.4		2

