

SH Core

1. Shape 形狀

Fig 1 - R type

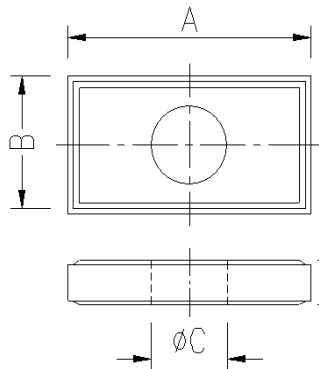


Fig 2 - S type

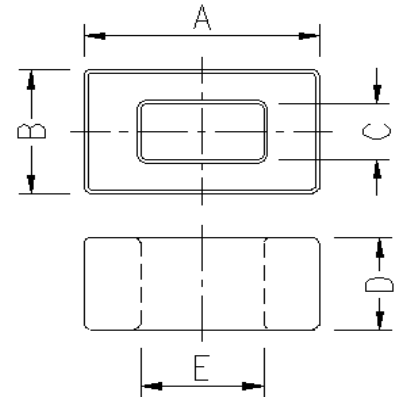


Fig 3 - E type

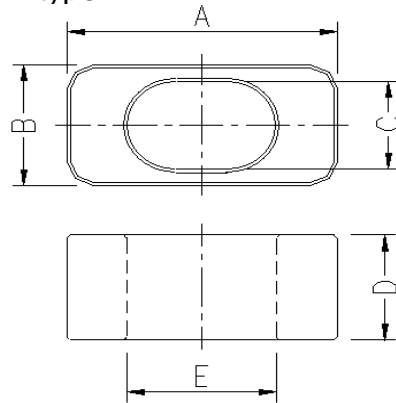
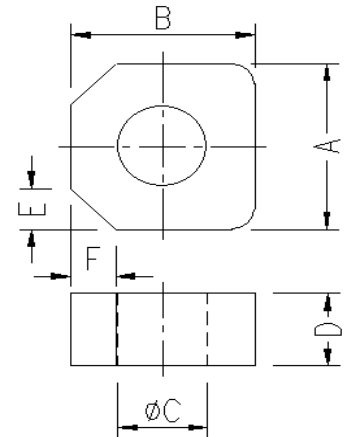
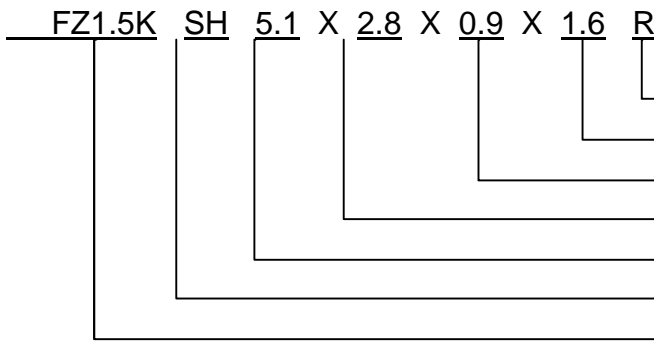


Fig 4 - RC type



2. Ordering Code 編碼規則



Product Configuration 產品形狀
 C = Inner Diameter 內徑
 D = Height 高度
 B = Width 寬度
 A = Length 長度
 Core Type 型式
 Material 材質

3. Dimensions 尺寸 (mm)

Core Size \ Conf.	A	B	C	D	E	F	Fig
SH 5.1x2.8x0.9x1.6 R	5.1±0.3	2.8±0.2	1.6±0.15	0.9±0.1			1
SH 5.5x3.0x9.0x1.4 S	5.5±0.3	3.0±0.2	1.4±0.15	9.0±0.3	4.0±0.2		2
SH 6.5x3.8x9.0x1.4 S	6.5±0.3	3.8±0.2	1.7±0.15	9.0±0.3	3.4±0.2		2
SH 10.0x7.5x5.5x3.5 E	10.0±0.4	7.5±0.3	3.5±0.2	5.5±0.3	5.5±0.3		3
SH 4.06x4.06x1.78x1.98 RC	4.06±0.13	4.06±0.13	1.98±0.13	1.78±0.18	1.0±0.1	1.0±0.1	4