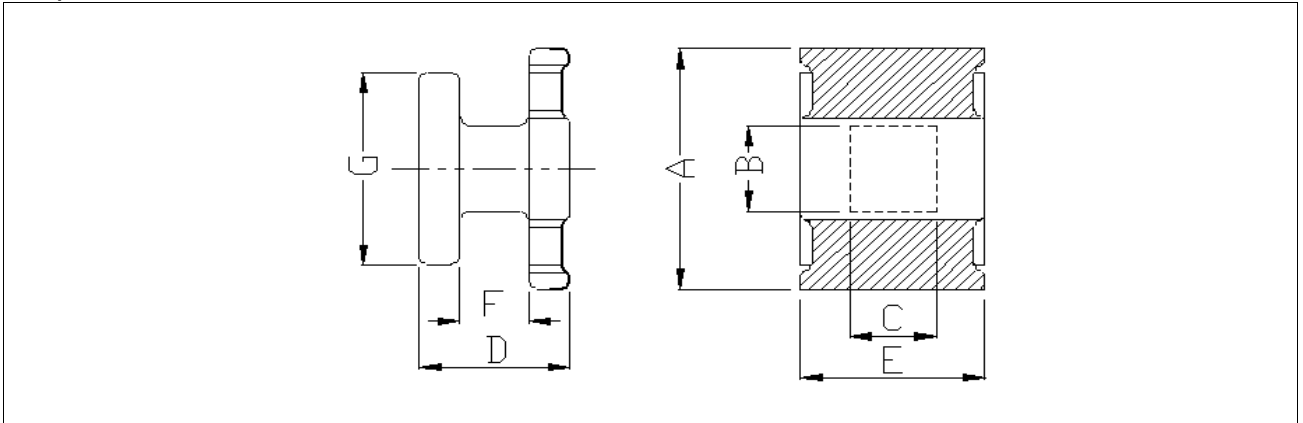
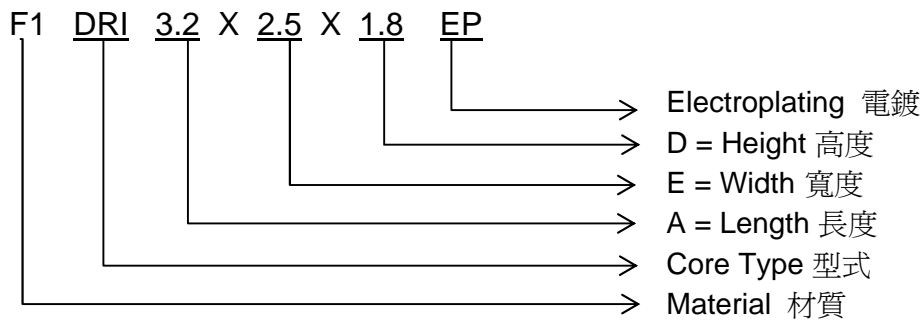


DRI Core

1. Shape 形狀



2. Ordering Code 編碼規則



3. Dimensions 尺寸 (mm)

Core Size \ Conf.	A	B	C	D	E	F	G
DRI 2.0x1.0x1.0 EP	2.0±0.2	1.0±0.1	2.0±0.2	0.8±0.15	1.0±0.15	0.3±0.15	2.0±0.2
DRI 3.2x1.6x1.8 EP	3.2±0.2	1.0±0.15	0.8±0.15	1.8±0.2	1.6±0.2	0.55±0.1	2.3±0.2
DRI 3.2x2.5x1.55 EP	3.2±0.2	1.5±0.15	1.5±0.15	1.55±0.15	2.5±0.2	0.6±0.1	2.5±0.2
DRI 3.2x2.5x2.1 EP	3.2±0.2	1.0±0.15	0.9±0.15	2.1±0.2	2.5±0.2	0.8±0.1	2.5±0.2
DRI 4.5x3.2x2.7 EP	4.5±0.2	1.75±0.15	1.5±0.15	2.7±0.2	3.2±0.2	1.2±0.1	2.3±0.2
DRI 5.7x5.0x4.7 EP	5.7±0.3	2.8±0.2	2.8±0.2	4.7±0.2	5.0±0.3	2.5±0.2	5.0±0.3